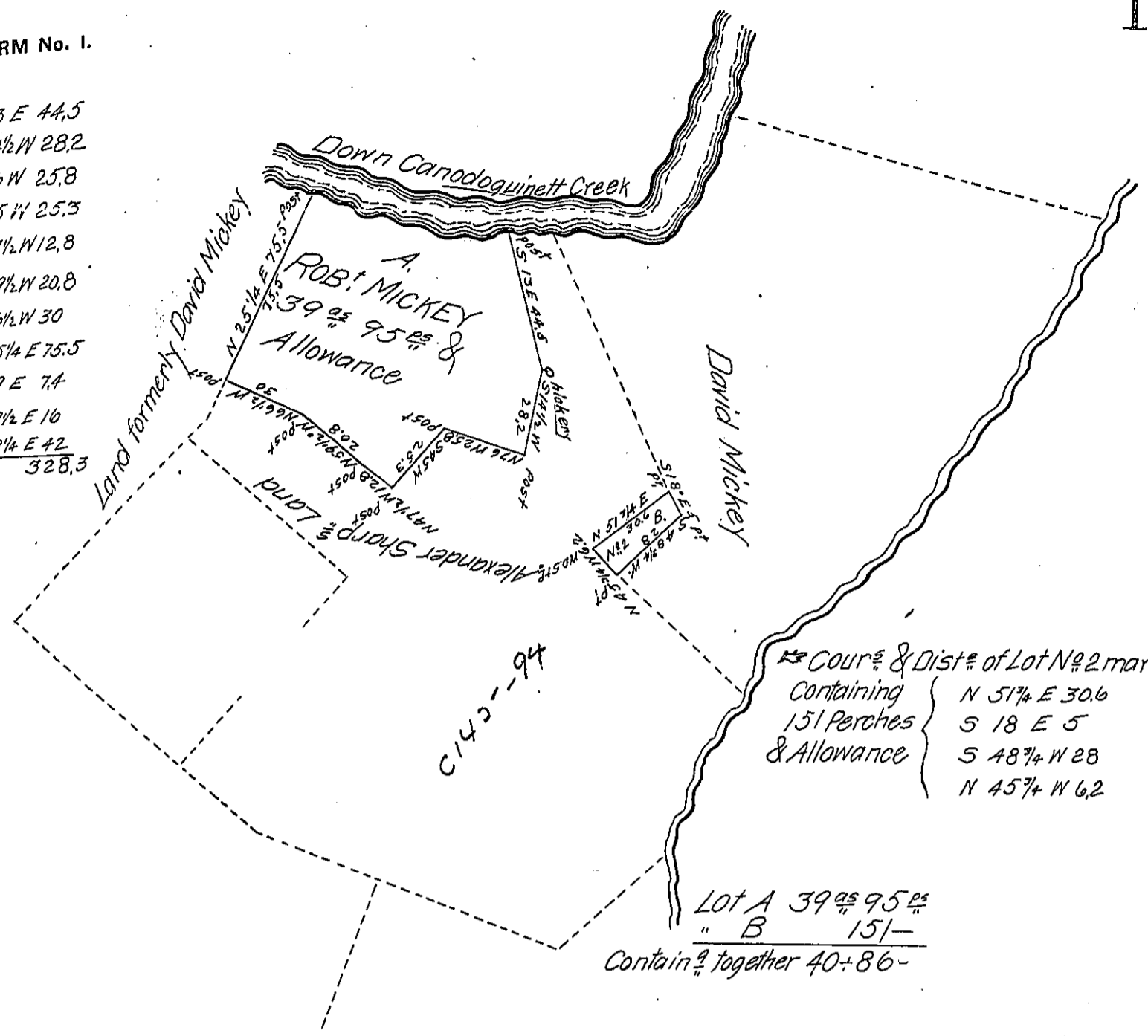


FORM No. 1.

S 13 E 44.5
 S 14 1/2 W 28.2
 N 76 W 25.8
 S 45 W 25.3
 N 47 1/2 W 12.8
 N 59 1/2 W 20.8
 N 66 1/2 W 30
 N 25 1/2 E 75.5
 S 59 E 7.4
 S 69 1/2 E 10
 S 79 1/2 E 42
 328.3
 Course down
 the Creek



The Draft of two Tracts or Lots of Land situate in Newton Township Cumberland County Containing together 40 ac 86 ac and Allowance of Six per Cent It being part of 228 ac 80 ac & Allowance Surveyed In pursuance of a Warrant Granted to Robt Mickey dated the 12th day of May Anno Domini 1763 Surveyed and divided off the 22nd day of Aug: 1821

To Saml Cochran Esquire
 Surveyor General

Samuel Ruby D.S.

IN TESTIMONY that the above is a copy of the original remaining on file in the Department of Internal Affairs of Pennsylvania, made conformably to an Act of Assembly approved the 16th day of February, 1833, I have hereunto set my Hand and caused the Seal of said Department to be affixed at Harrisburg, this second day of January 1906

Leach R. Brown
 Secretary of Internal Affairs.